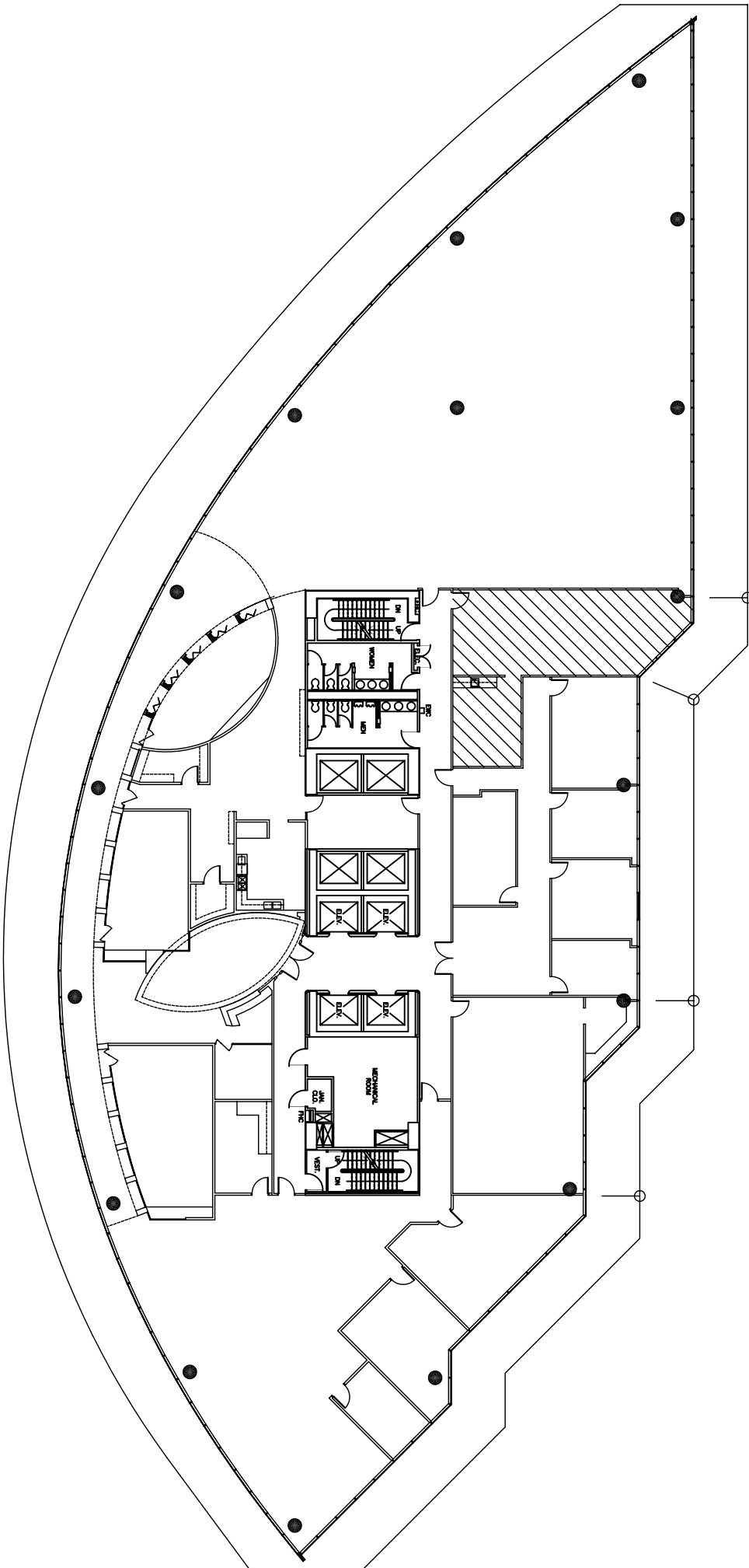




**GRIFFIN  
PARTNERS**

For Management Information:  
**KRISTIN WELLS**  
 Tel: 713 621 7719  
 Fax: 713 961 4855

# 1 177 WEST LOOP SOUTH Level 05



VACANT  
 SUITE #560  
 886 NUA  
 1,008 NRA



**CDI DOUGLASS ♦ PYE**  
 COMPUTER DOCUMENTATION  
 2847.08  
 NOVEMBER 12, 2008