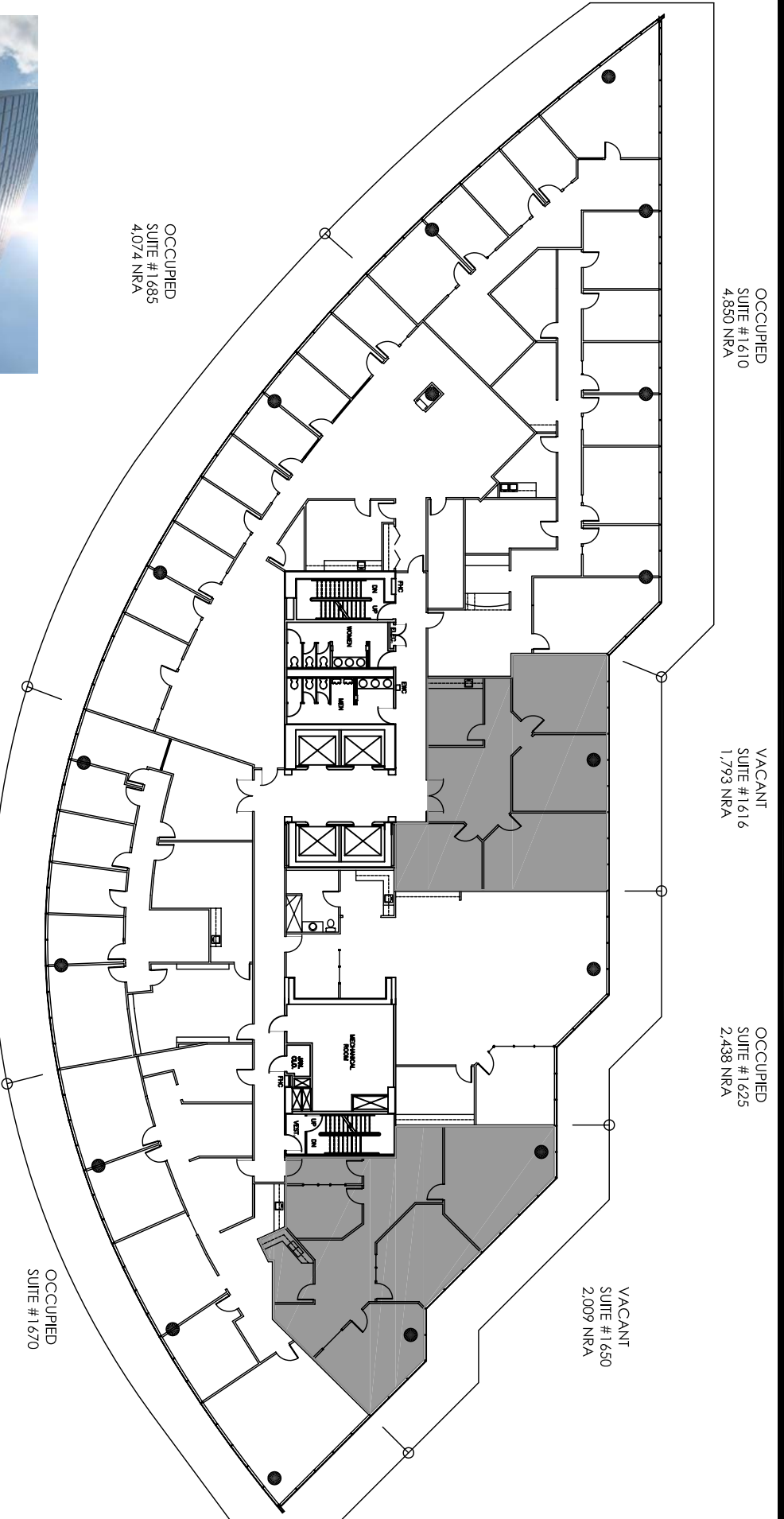




FLOOR PLANS ARE FOR CONCEPTUAL PURPOSES ONLY; THEY ARE NOT TO SCALE AND MAY NOT REFLECT EXISTING CONDITIONS. AS BUILTS MUST BE VERIFIED.



0 5 10 20



GRIFFIN PARTNERS

CONTACT

PROP. MANAGEMENT: LYNN KELLEHER
 PHONE: 713-621-7719
 FAX: 713-961-4855
 EMAIL: LKELLEHER@GRIFFINPARTNERS.COM

1177 WEST LOOP SOUTH

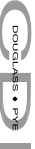
LEVEL 16



GRIFFIN PARTNERS

CONTACT

LEASING AGENT: JASON LONG
 PHONE: 713-439-5332
 FAX: 713-439-5372
 EMAIL: JLONG@GRIFFINPARTNERS.COM



Architecture • Interiors • Planning
 5120 WOODWAY DR
 Suite # 7050/7056
 Houston, TX 77055
 Tel: 713-783-5000
 Fax: 713-783-5006
 www.cdi-consultants-pyp.com

Proj. # 1047.CB
 MARCH 1, 2011